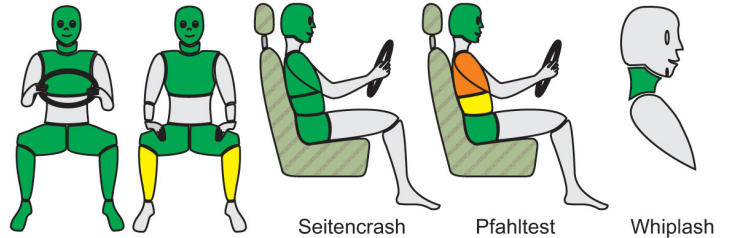
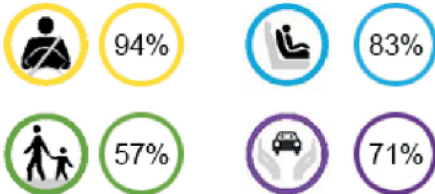


# Mittelklasse

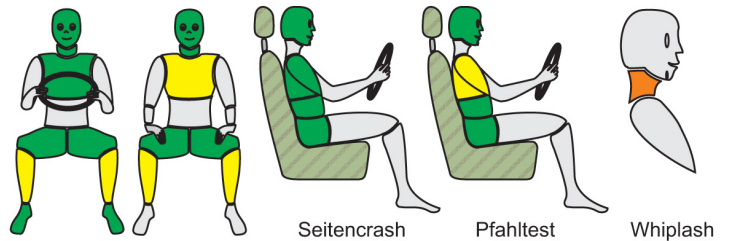
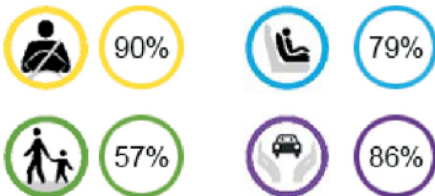
## Chevrolet Malibu

Test 2011 ★★★★★



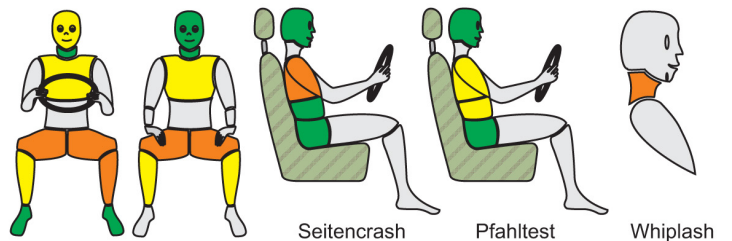
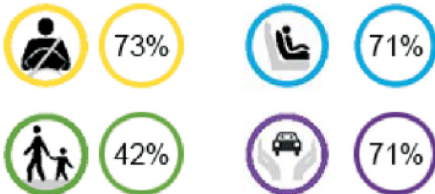
## Mercedes C-Klasse Coupe

Test 2011 ★★★★★



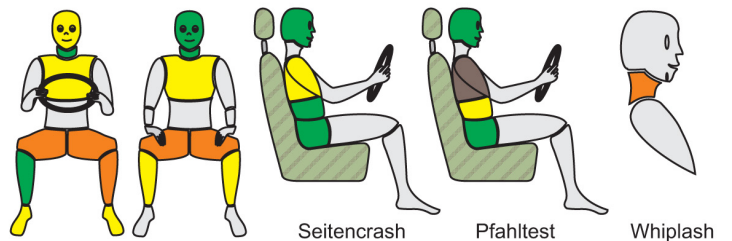
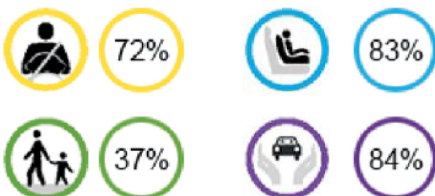
## Mg6

Test 2011 ★★★★★☆



## Renault Fluence ZE

Test 2011 ★★★★★☆



■ gut     
 ■ ausreichend     
 ■ mittel     
 ■ schwach     
 ■ schlecht

Erwachsenen-sicherheit

Fußgänger-sicherheit

Kindersicherheit

Sicherheitsassistenten